



**E.A. Martin**  
& Son Ltd

## TILING TOOL RANGE



TILING TOOLS

LIGHT DUTY  
TILE CUTTERS

PROFESSIONAL  
TILE CUTTERS

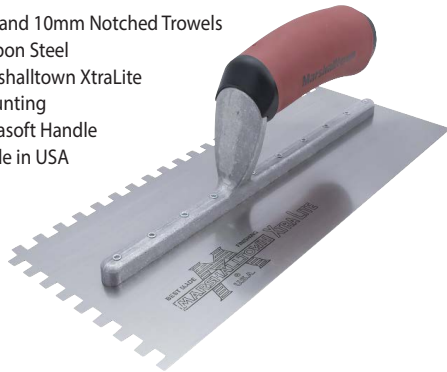
FASTcap™ TILE  
LEVELLING SYSTEM

# TILING TOOLS



## Notched Trowels

- 6, 8 and 10mm Notched Trowels
- Carbon Steel
- Marshalltown XtraLite Mounting
- Durasoft Handle
- Made in USA



Part No	Size	Notch
M702SDXH	11x4½"	6x6mm
M788SDXH	11x4½"	8x8mm
M5779SDXH	11x4½"	10x10mm

## Lay Flat Trowels

- Notch design for superior coverage & adhesion of medium to large format
- Wave-shaped notches create ridges that provide an overlapping & more easily collapsible action of thinset mortar
- Unique notch geometry helps to eliminate air pockets between the tile and underlayment
- Superior hold strength between the aluminium alloy Xtralite® mounting & blade
- DuraSoft handle
- Made in the USA with Global Materials

### Part No

MLF1411SD	11" x 4½" (279mm x 114mm)	¼" (6mm)
MLF3811SD	11" x 4½" (279mm x 114mm)	⅜" (10mm)
MLF1211SD	11" x 4½" (279mm x 114mm)	½" (13mm)
MLF1416SD	16" x 4" (406mm x 102mm)	¼" (6mm)
MLF3816SD	16" x 4" (406mm x 102mm)	⅜" (10mm)
MLF1216SD	16" x 4" (406mm x 102mm)	½" (13mm)



## Tile Grouters Float

- White rubber, non-mark pure gum rubber face
- Edges are bevelled, the two front corners are rounded
- DuraSoft handle



Part No	Size
M43D	9"x4" (225x100mm)

## Tile Grouters Float

- White rubber, non-mark pure gum rubber face
- Edges are bevelled, the two front corners are rounded
- Moulded plastic handle



Part No	Size
M43XL	12"x4" (300x100mm)

## Tile Grouters Float

- White rubber, non-mark pure gum rubber face
- Edges are bevelled, the two front corners are rounded
- Moulded plastic handle



Part No	Size
M43	9"x4" (225x100mm)

# TILING TOOLS



## Tile Grout Scrubbing Sponge

- For removing excess grout
- Round corners to prevent digging out or marring joints
- The yellow grout sponge wipes off excess grout from joints while the white scrubber removes grout haze and stubborn mortar colours



Part No	Size
MTLW	6 1/2" (165 mm) x 4 1/2" (114 mm) x 2 1/8" (54 mm)

## Contour Gauge

- Plastic pins slide in to record irregular shapes for marking on tile
- Graduated frame
- Gauge holds shape during transfer



Part No	Size
MCGP	4" x 10"

## Handheld Tile Cutter

- Score and snap ceramic tile
- Can cut and snap curves
- Replacement scoring wheel available (HTCR)
- Tungsten carbide scoring wheel
- DuraSoft handles
- Blade lock



Part No	Size
MHTC	8"

## Tile Nippers

- Removes small pieces or irregular edges from tile
- Can be used to cut curves or shapes into tile
- Rugged carbide tips
- DuraSoft handles
- Blade lock



Part No	Size
MTN1	8 1/2"

## Compound Tile Nippers

- Removes small pieces or irregular edges from tile
- Can be used to cut curves or shapes into tile
- Extra leverage requires less effort to cut
- DuraSoft handles
- Blade lock



Part No	Size
MTN2	9"

## Glass Tile Nippers

- Round blades cut evenly from both sides of glass tile
- Use to cut straight lines or smaller precision cuts in glass mosaic tiles
- Blades can be rotated to keep a sharp edge in use
- DuraSoft handles
- Blade lock



Part No	Size
MTN3	8"

# TILING TOOLS



## Ceramic Tile File

- Removes rough or irregular edges on tile, marble and stone
- Comes with a DuraSoft handle
- Carbide coated



Part No	Size
MTFTS	6½" x 5/8"

## Bent Scraper

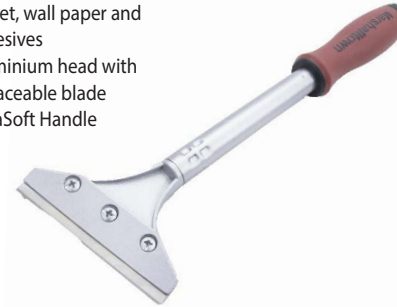
- Removes vinyl flooring, carpet, wall paper and adhesives
- DuraSoft threaded handle to accept broom handle
- Highly polished stainless steel blade



Part No	Blade Size
ME91D	3"

## Razor Scraper

- Removes vinyl flooring, carpet, wall paper and adhesives
- Aluminium head with replaceable blade
- DuraSoft Handle



Part No	Blade Size	Handle Length
MWFS49D	4"	12"

## Grout Saw

- Die cast aluminium with finger guard
- 2" (50mm) blade coated with tungsten carbide
- DuraSoft handle



Part No	Size
M446	2" (50mm)
M15465	Replacement Blade

## Grout Removal Tool

- Removes existing grout mortar and caulk
- Comes with a DuraSoft handle
- Includes two blades



Part No	Size
MGRT200	13"

## Tile Space Popper

- Easily removes the spacers between tiles before grouting
- DuraSoft handle



Part No
MTSP473

## Scoring Knife

- Used to score cement backer board
- 3 tungsten carbide tips
- Comfortable soft grip handle



Part No
MSC25

## Folding Scoring Knife

- Used to score cement backer board
- Tungsten carbide scoring tip Size: 7"
- 1-button opening and closing



Part No
MFSK2

# LIGHT DUTY TILE CUTTERS

Light-Duty Tile Cutters are recommended for use with ceramic tile



## Light Duty Tile Cutter

### MTC17-DS

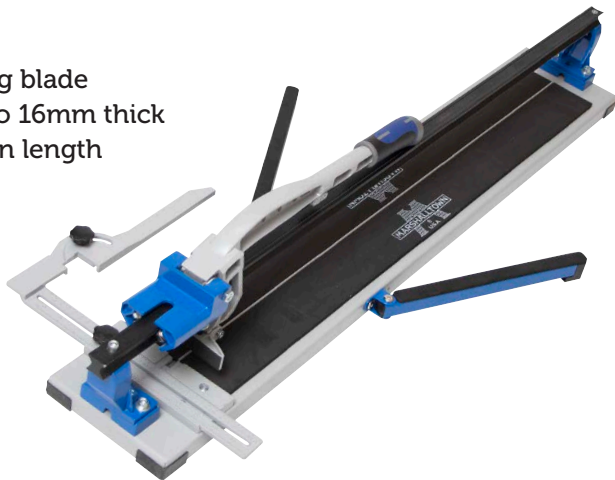
- 15mm cutting blade
- Cuts tile up to 12mm thick and 432mm in length
- Two rod rail system
- Cuts up to 305mm x 305mm at 45° angle



## Light Duty Tile Cutter

### MTC36-DS

- 22mm cutting blade
- Cuts tile up to 16mm thick and 914mm in length



## Light Duty Tile Cutter

### MTC24-DS

- 22mm cutting blade
- Cuts tile up to 12mm thick and 610mm in length



## FEATURES

- CONSISTENT PERFORMANCE, DIY AND TRADE FRIENDLY
- STEEL GUIDE RAILS FOR EFFICIENT SCORE & SNAP OPERATION
- PORTABLE
- EXCEPTIONAL VALUE
- LIGHTWEIGHT BUT STURDY ALUMINIUM BASE
- FAST ACCURATE CUTS

# PROFESSIONAL TILE CUTTERS



Professional Tile Cutters are recommended for use with ceramic and porcelain tile

- DESIGNED BY A PROFESSIONAL, FOR PROFESSIONALS
- HEAVY-DUTY STEEL GUIDE RAILS FOR SMOOTH SCORING
- EXTENSION BAR FOR ADDITIONAL SUPPORT
- REINFORCED LIGHTWEIGHT ALUMINIUM STRUCTURAL BASE
- EXCEPTIONAL PERFORMANCE
- PREMIUM CARBIDE SCORING WHEEL

## Pro Tile Cutter

### MPTC24-DS

- 22mm cutting blade
- Cuts tile up to 16mm thick (adjustable up to 16mm) and 610mm in length



## Pro Tile Cutter

### MPTC36-DS

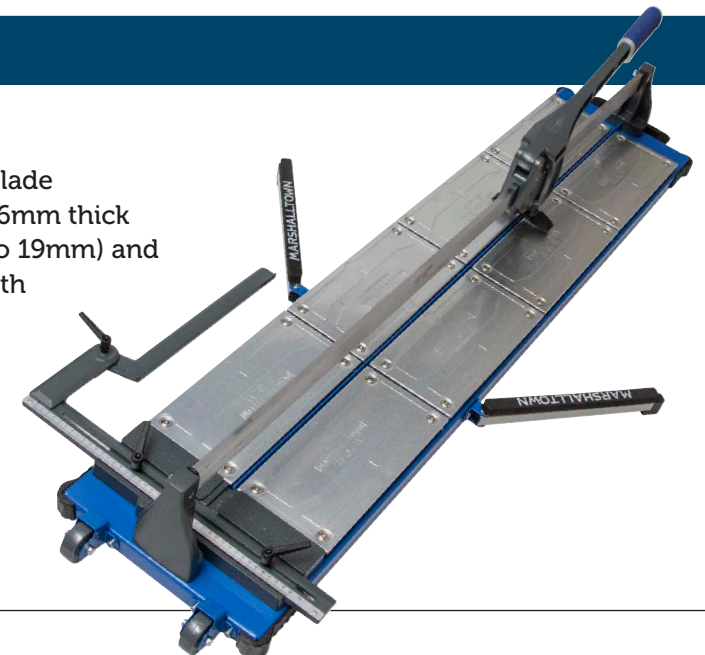
- 22mm cutting blade
- Cuts tile up to 19mm thick (adjustable up to 19mm) and 914mm in length



## Pro Tile Cutter

### MPTC48-DS

- 22mm cutting blade
- Cuts tile up to 16mm thick (adjustable up to 19mm) and 1219mm in length



# FASTcap™ TILE LEVELLING SYSTEM

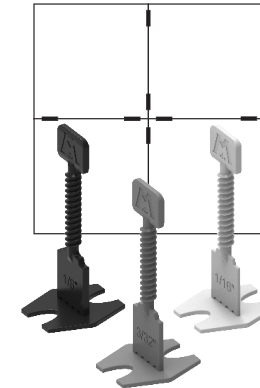


## Ratchet Caps

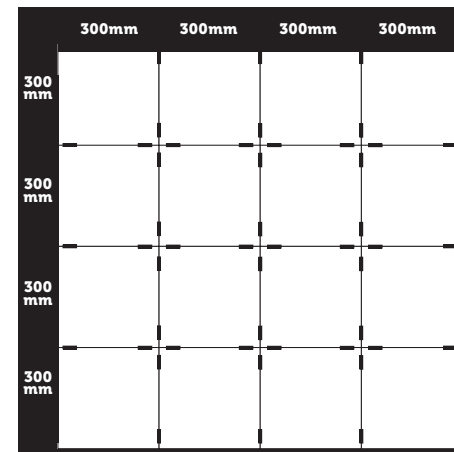


Part No.  
FASTCAP250  
(x250)

Part No.  
FASTCAP  
(x50)



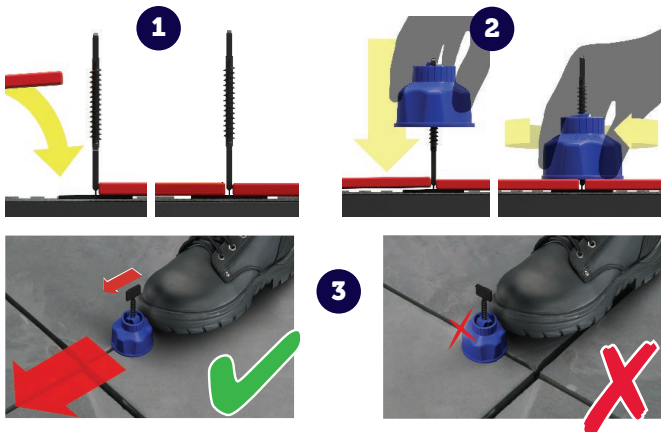
## How to use Spacer Bases



Straight Spacer Bases can be used in a traditional method.

4 Spacer Bases used per intersection.

Straight Spacer Bases should also be used in straight grout joints, every 300mm from intersections. Use 1 straight spacer every 300mm along larger tiles.



Part No	Description	Qty
FASTCAP250	FASTcap Ratchet Cap	Bucket (x250)
BASE18STRB	3mm (1/8") Spacer Base Straight (Black)	Bag (x250)
BASE332STRB	2.5mm (3/32") Spacer Base Straight (Grey)	Bag (x250)
BASE116STRB	1.5mm (1/16") Spacer Base Straight (White)	Bag (x250)
FASTCAP	FASTcap Ratchet Cap	Bucket (50)
BASE18STR	3mm (1/8") Spacer Base Straight (Black)	Bag (x50)
BASE332STR	2.5mm (3/32") Spacer Base Straight (Grey)	Bag (x50)
BASE116STR	1.5mm (1/16") Spacer Base Straight (White)	Bag (x50)

## FEATURES

Marshalltown FASTcap™ utilizes innovative Ratchet Caps that can be pressed down over the Spacer Bases, avoiding the need to spin the caps on or off, which saves time and reduces fatigue.



**E.A. Martin**  
& Son Ltd

E.A. Martin & Son Ltd  
Wholesale Distributors

Tel: 028 295 40670  
Fax: 028 295 41159  
Email: [sales@eamartin.co.uk](mailto:sales@eamartin.co.uk)

(e & o e Prices Shown Exclude VAT)

ID2667 Marshalltown Tiling Tools 2022 Prices